



PROTECTA

Fall Protection

3M™ Protecta® Cabloc Cable Vertical Safety System.

Trusted, quality fall protection.

www.3M.com/FallProtection

The 3M™ Protecta® Cabloc Vertical Cable System offers fall protection for workers whilst providing a functional and practical means of access and egress on structures such as wind turbines and communication towers.

It can be permanently installed to a ladder or other vertical structure. Components are available in either stainless or galvanised steel options.

Features and benefits.

- ▶ Easy and quick to install
- ▶ The top and bottom anchors are available in either galvanised or stainless steel
- ▶ Bottom anchor tension indicator provides a visual indication that the cable is correctly tensioned
- ▶ Can be installed on structures that incline up to 15 degrees, making it suitable for a variety of structures
- ▶ Components are made from high-quality materials with corrosion-resistant finishes making the system suitable for installation in a wide range of aggressive environments
- ▶ Users can attach and detach at any point along the length of the system allowing easy access to platforms and adjacent work areas
- ▶ Traveller automatically follows the user and locks in the event of a fall, providing uninterrupted movement for the user during ascent and descent whilst maintaining complete safety
- ▶ The Cabloc system, used in conjunction with the new Cabloc traveller, is CE marked and tested and conforms with EN353-1:2014. This provides the end user with complete confidence that the system meets the latest standards and legislation



Applications.

3M™ Protecta® Cabloc Vertical Cable Safety Systems are suitable for use in a number of applications including:

- ▶ Ladder access
- ▶ Mast and pylon access including lattice construction towers and monopoles
- ▶ Wind turbine access
- ▶ Lighting column access



CE
EN353



One traveller, two options.

With its new integrated metal energy absorber, the 3M™ Protecta® Cabloc traveller is more robust than ever and comes with a captive carabiner in either steel or stainless steel.

Capacity:

1 user up to 140kg (including tools).



Upgrading your current 3M Protecta Cabloc system just got easier...

The new 3M Protecta Cabloc traveller has been rigorously tested on all 3M Protecta Cabloc system configurations* so upgrading your existing 3M Protecta Cabloc system to meet the latest standard is easy... just change to the new traveller!

The anti-inversion feature on the traveller prevents the user from mounting the traveller on the cable incorrectly.

Captive twist-lock carabiner (option of zinc-plated or stainless steel).



An integrated energy absorber reduces the maximum fall arrest force. In the event of a fall this absorber also acts as a fall indicator, showing the device has been deployed and needs to be taken out of service.

	Description
6180200	3M Protecta Cabloc traveller with zinc-plated carabiner
6180201	3M Protecta Cabloc traveller with stainless steel carabiner

* Using 8mm 6 x 19 galvanised cable and 8mm 7 x 19 stainless steel cable.

Systems using the universal bracket must include an in-line energy absorber. Refer to our technical pack for more information.

Standard system.

For use on ladders.

3M™ Protecta® Cabloc Cable Vertical Safety System

Top Anchor (no shock absorber)

Galvanised steel - [6191035](#)
Stainless steel - [6191032](#)

**8mm Diameter 7 x 19
Stainless Steel Cable**
[AC300SXX](#)

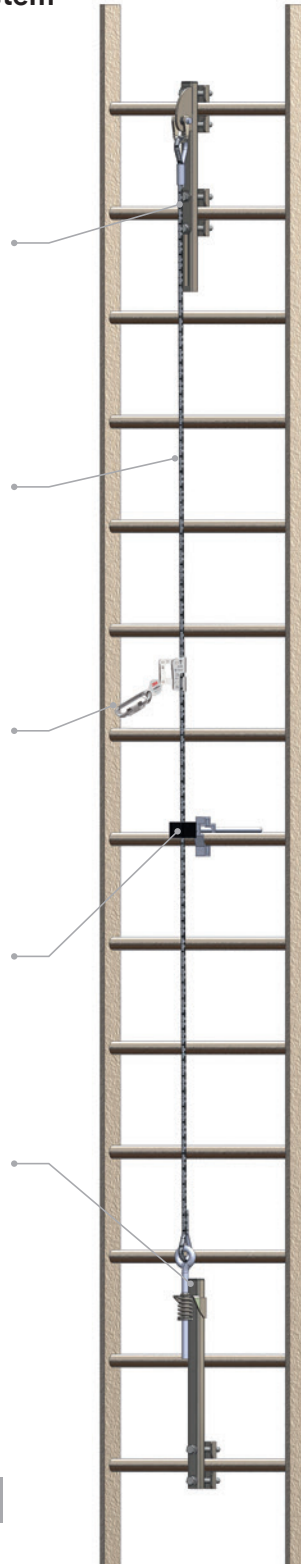
Traveller with Energy Absorber

Zinc-plated - [6180200](#)
Stainless steel - [6180201](#)

Intermediate Guide
[AC320](#)

Bottom Anchor

Galvanised steel - [6191036](#)
Stainless steel - [6191033](#)

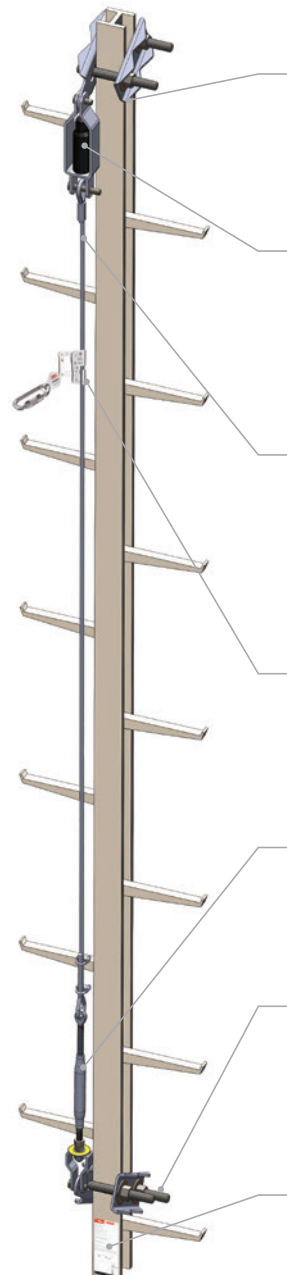


○	Material type
Ⓢ	Stainless steel
ⓐ	Galvanised steel

Universal anchor option.

For use on ladders, monopoles and other structures.
Refer to our technical data for more information.

3M Protecta Cabloc Cable Vertical Safety System with Universal Top & Bottom Anchors



*Universal Top and Bottom Anchor

Stainless steel - [AC340](#)

*In-line Energy Absorber

Stainless steel - [AC325](#)

8mm Diameter Cable

Galvanised steel
(6 x 19) - [AC300GXX](#)
Stainless steel
(7 x 19) - [AC300SXX](#)

Traveller with Energy Absorber

Zinc-plated - [6180200](#)
Stainless steel - [6180201](#)

Cable Tensioner

Stainless steel - [AC330](#)

*Universal Top and Bottom Anchor

Stainless steel - [AC340](#)

System ID Tag

EU - [6191088](#)
CEE - [6191104](#)
Arabic - [6191105](#)

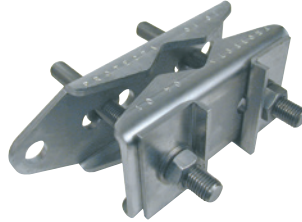
*Systems using the universal bracket must include an in-line energy absorber. Refer to our technical pack for more information.

3M™ Protecta® Cabloc Vertical Cable Safety System Top Bracket for Ladders



	○	kg
6191032	Ⓢ	1.70
6191035	Ⓒ	1.70

3M Protecta Cabloc Vertical Cable Safety System Universal Bracket for Ladders and Monopole



	○	kg
AC340	Ⓢ	2.50

3M Protecta Cabloc Vertical Cable Safety System Ladder Extension Bracket



	○	kg
6180174	Ⓒ	10.50
6180175	Ⓢ	11.50

3M Protecta Cabloc Vertical Cable Safety System Bottom Bracket for Ladders



	○	kg
6191033	Ⓢ	1.50
6191036	Ⓒ	1.50

3M Protecta Cabloc Vertical Cable Safety System Tensioner



	○	kg
AC330	Ⓢ	0.80

3M Protecta Cabloc Vertical Cable Safety System Cable Guide



	○	kg
AC320	Ⓢ	0.40

3M Protecta Cabloc Vertical Cable Safety System In-line Energy Absorber



	○	kg
AC325	Ⓢ	1.20

3M Protecta Cabloc Vertical Cable Safety System ID Tag

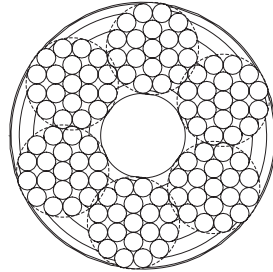


6191088 (EU)
6191104 (CEE)
6191105 (Arabic)

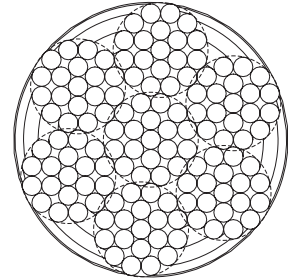
Cable options.



**8mm, 6 x 19
Galvanised Steel Cable**
(Replace XX by the
length required in m
includes swage)



**8mm, 7 x 19
Stainless Steel Cable**
(Replace XX by the
length required in m
includes swage)



AC300GXX

AC300SXX

3M™ Protecta® Cabloc Cable Vertical Safety System Kit

	←····→	Cable Guides	kg
6190101	10m	0	11.30
6190102	20m	1	14.60
6190103	30m	2	17.10
6190104	40m	3	20.10
6190105	50m	4	23.10



Kit includes all components needed: Traveller (6180200), universal top and bottom anchors (AC340 x 2), cable tensioner (AC330), in-line energy absorber (AC325), stainless steel cable (AC300SXX), cable guide quantity as indicated in table (AC320), system tag (6191088).



The New 3M™ Protecta® Fall Arrest Harness Range.

Raising the bar. Not the price.

Available in a variety of styles and configurations, these new harnesses have enhanced features including water and stain resistant webbing, an auto-resetting lanyard keeper as well as softer and more durable hip padding.



Standard vest style



Comfort belt style



Standard vest style, horizontal leg straps



Comfort belt style, horizontal leg straps

